

# IGR1048 / IGR2048

Rectifier Modules  
-48V 1000W/ -48V 2000W

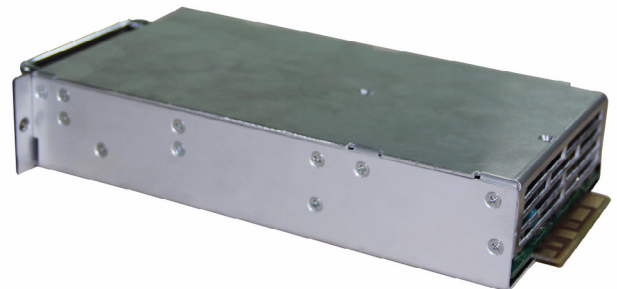


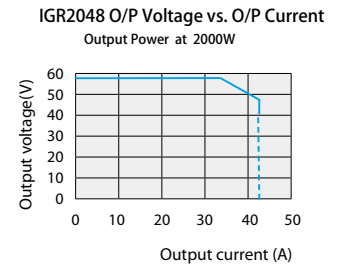
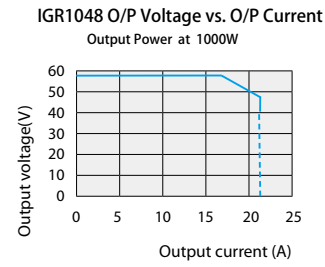
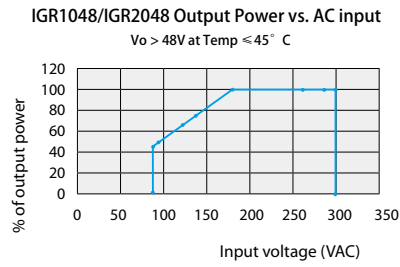
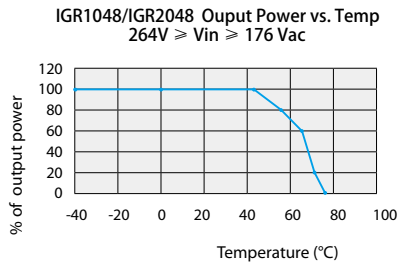
## Features

- Low rectifier/subrack height minimize space needed for power in embedded applications
- DSP (Digital Signaling Processor) control, fewer components, optimized operation and active load sharing for increased reliability
- Compliant with global standards delivers quality, performance and reliability no matter what the application or location demands
- High efficiency, >94% efficiency reduces power consumption for lower operating costs
- Hot pluggable facilitates future extensions
- Wide input voltage range operates in the most demanding environments where input voltage changes (85-300VAC)
- Wide temperature operating range (-40° C to +75° C) meets the harshest climatic environment requirements

## Description

IGR1048/IGR2048 rectifier is optimized for the demanding power needs of wireless communications, enterprise and broadband access equipment. Requiring only 1u (44mm) of rack height, these compact rectifiers can provide up to 1000 Watts/2000Watts of power and operate up to 75° C. The small size can free up space to reduce system size.





## Technical Specifications

AC Input	IGR1048	IGR2048
Input Voltage, Permitted Variation	85 to 300 V AC	85 to 300 V AC
Line Frequency	45 to 65 Hz	45 to 65 Hz
Max Input Current	6.8 A	13.6 A
Power Factor	0.99	0.99
THD (Total Harmonic Distortion)	≤ 5% for 50%-100% load	≤ 5% for 50%-100% load

DC Output	IGR1048	IGR2048
Output Voltage, Adjustment Range	-42 to -58 V DC	-42 to -58 V DC
Output Power	1000W@Vout >48VDC	2000W@Vout >48VDC
Output Power, Derated for Input	See Diagram	See Diagram
Output Current	20.83 A @ -48 VDC	41.66 A @ -48 VDC
Efficiency	>94%	>94%
Psophometric Noise (System)	≤ 1mV; ≤ 32dBrc for 50%-100% load	≤ 1mV; ≤ 32dBrc for 50%-100% load

Alarms & Visuals	
Rectifier Alarm and Signaling	Alarms and status reported via CAN bus to system controller
Visual Indications	Green LED: Normal Operation Yellow LED: Alarm Red LED: Failure Flashing Red LED: Fan Failure

Environment	
Working Temperature	-40 to +75° C
Storage Temperature	-40 to +85° C
Relative Humidity	0 to 95%
Altitude	2000m, at full power
EMC	ETSI EN 300 386 class B, FCC CFR 47 Part 15 class B, Telcordia GR-1089-CORE class B

Size & Weight	
Dimension (H×W×D)	41.5×126×219mm
Weight	1.2 kg

Control & Monitoring	
Controller Module	please see IGM02 brochure

**Notes**  
\*Specifications are subject to change without notice. If product will be used for critical components in life support systems, hazardous environments, or nuclear control systems, written consent from company will be required.

